

BBG-OSC1A (Rack Mount)



Reference Oscillator

Description

The BBG-OSC1A (OSC1) is a stand-alone reference oscillator used to convert 115V, 60 Hz AC input to a custom voltage and frequency.

The OSC1 is factory configurable to customer requirements for easy field installation. Current models available include 115V, 400 Hertz. Other models available upon request.

Applications

- Radar Systems (antenna azimuth)
- Navigation Systems (gyrocompass, speed log, course, pitch, and roll)
- Industrial Processes (position, velocity)
- Meteorology Instruments (wind speed and direction)
- Many Others

Features

- 115 VAC, 60 Hz Input
- 115 VAC, 400 Hz Output
- Over Current Protected
- Over Voltage Protected
- 115 VAC, 60 Hz Output
- 1 Amp Continuous, 3 Amp Peak

BBG Incorporated

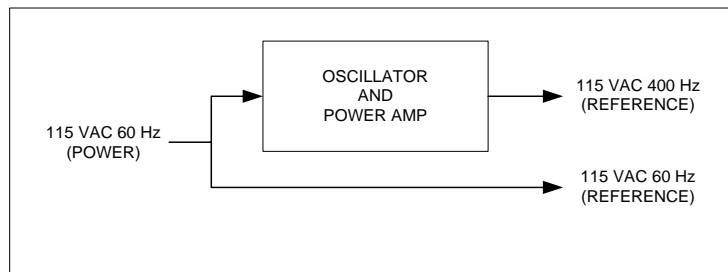
1708 South Park Court • Chesapeake, VA 23320

Phone:(757) 366-9211 • Fax:(757) 366-9170 • E-mail: sales@bbginc.com • Website: www.bbginc.com

BBG-OSC1A

Product Specifications

Chart



The BBG-OSC1A operates on 115 Volt, 60 Hz AC input power and performs frequency conversion to output a high power 115V, 400 Hz reference output. Due to the pulsating power supply, the device operates efficiently. The OSC1 provides over current and over temperature protection for the 400 Hz power amplifier. A 115V, 60 Hz output is provided from the power input.

Technical Specifications

Parameter	Value	Units
Input		
Power	115	Volts AC
	60	Hertz
	6.3	Amps
Phase	Single	
Wave	Sine	
Output		
Reference (400 Hz)	115	Volts AC
	400	Hertz
	3	Amp (Peak)
Reference (60 Hz)	Connected To Input Power	
Phase	Single	
Wave	Sine	
Temperature Range		
Operating	-25 to +70	°C
Storage	-65 to +125	°C
Weight	53	Lbs
Dimensions	10.5H x 19.0W x 20.8D	In
	26.7H x 48.3W x 52.8D	Cm



1708 South Park Court • Chesapeake, VA 23320
Phone: (757) 366-9211 • Fax: (757) 366-9170
E-mail: sales@bbginc.com • Website: www.bbginc.com

FRONT PANEL FUSE LIST

Inputs and outputs are fused on the front panel using 5mm x 20 mm fuses. A list of fuse numbers, fused signals and fuse values are provided in the following List.

Fuse	Signal	Value
F1	115V AC 60 Hz NEUTRAL (INPUT)	6.3 Amp
F2	115V AC 60 Hz LINE (INPUT)	6.3 Amp
F3	115V AC 60 Hz NEUTRAL (OUTPUT)	3.15 Amp
F4	115V AC 60 Hz LINE (OUTPUT)	3.15 Amp
F5	R1 115V AC 400 Hz (OUTPUT)	3.15 Amp
F6	R2 115V AC 60 Hz (OUTPUT)	3.15 Amp

CONNECTOR LIST

Inputs and outputs are available on DIN rail terminal blocks provided with the BBG-OSC1. Inputs and outputs are listed below:

I/O CONNECTOR TYPE: DIN Terminal Blocks

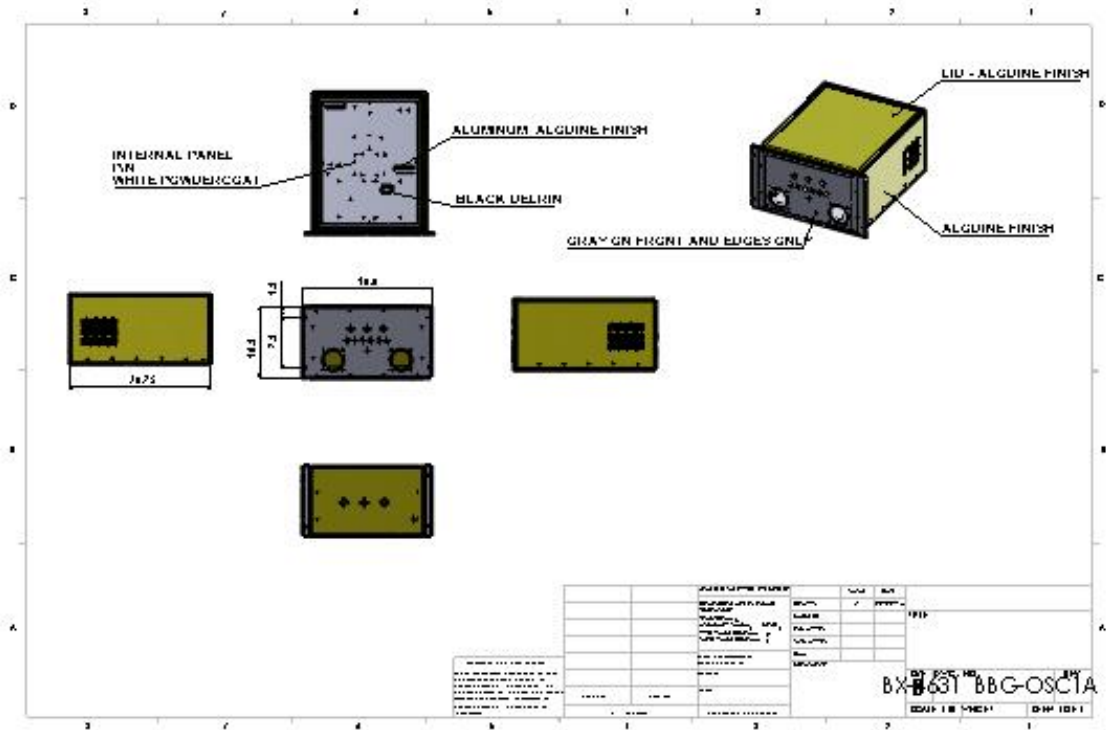
CONNECTOR MATE: Ferrules

Signal	Connector
Chassis Ground (E1)	TB1
115V AC 60 Hz NEUTRAL (INPUT)	TB2
115V AC 60 Hz LINE (INPUT)	TB3
Chassis Ground (E1)	TB4
115V AC 60 Hz NEUTRAL (OUTPUT)	TB5
115V AC 60 Hz LINE (OUTPUT)	TB6
Chassis Ground (E1)	TB7
R1 115V AC 400 Hz (OUTPUT)	TB8
R2 115V AC 400 Hz (OUTPUT)	TB9
*** FACTORY USE ONLY ***	TB10
*** FACTORY USE ONLY ***	TB11



BBG-OSC1A

Product Specifications



1708 South Park Court • Chesapeake, VA 23320
 Phone: (757) 366-9211 • Fax: (757) 366-9170
 E-mail: sales@bbginc.com • Website: www.bbginc.com